



# Title Plan - LT 518236

---

**Survey Number** LT 518236  
**Surveyor Reference** 33726 Wainui Rd 1  
**Surveyor** Kendall Lisa Reid  
**Survey Firm** Wood & Partners Consultants Ltd  
**Surveyor Declaration**

---

## Survey Details

**Dataset Description** LOTS 1, 2, 3, 194 TO 196, 203, 209, 916 TO 918 BEING A SUBDIVISION OF LOT 1001 DP 499776

**Status** Initiated

**Land District** North Auckland

**Submitted Date**

**Survey Class** Class A

**Survey Approval Date**

**Deposit Date**

---

## Territorial Authorities

Auckland Council

---

## Comprised In

CT 742551

---

## Created Parcels

Parcels	Parcel Intent	Area	CT Reference
Lot 1 Deposited Plan 518236	Fee Simple Title	0.2990 Ha	811544
Lot 194 Deposited Plan 518236	Fee Simple Title	0.0690 Ha	811545
Lot 195 Deposited Plan 518236	Fee Simple Title	0.0681 Ha	811546
Lot 918 Deposited Plan 518236	Vesting on Deposit for Road	0.0136 Ha	
Lot 917 Deposited Plan 518236	Vesting on Deposit for Road	0.0034 Ha	
Lot 916 Deposited Plan 518236	Vesting on Deposit for Road	0.0038 Ha	
Lot 196 Deposited Plan 518236	Fee Simple Title	0.0665 Ha	811550
Lot 209 Deposited Plan 518236	Fee Simple Title	0.0678 Ha	811551
Lot 203 Deposited Plan 518236	Fee Simple Title	0.0682 Ha	820472
Lot 2 Deposited Plan 518236	Fee Simple Title	0.3934 Ha	820473
Lot 3 Deposited Plan 518236	Fee Simple Title	0.3348 Ha	820474
Area A Deposited Plan 518236	Land Covenant		
Area B Deposited Plan 518236	Land Covenant		
Area C Deposited Plan 518236	Land Covenant		
Area D Deposited Plan 518236	Land Covenant		
Area E Deposited Plan 518236	Land Covenant		
<b>Total Area</b>		<hr/> 1.3876 Ha	

# Schedule / Memorandum

---

Land Registration District

**North Auckland**

Survey Number

**LT 518236**

Territorial Authority (the Council)

**Auckland Council**

**Notes**

Last Edited: 21 Dec 2017 09:50:46

AREAS SHOWN AS A - E HEREON ARE TO BE SUBJECT TO LAND COVENANTS.









# Title Plan - LT 518237

---

**Survey Number** LT 518237  
**Surveyor Reference** K33726 Wainui Road 2  
**Surveyor** Michael Rowan Hallam  
**Survey Firm** Wood & Partners Consultants Ltd  
**Surveyor Declaration**

---

## Survey Details

**Dataset Description** LOTS 1, 2, 46 TO 48, 53 TO 57, 914 AND 915 BEING A SUBDIVION OF SECTION LOT 1000 DP 493842

**Status** Initiated

**Land District** North Auckland **Survey Class** Class A

**Submitted Date** **Survey Approval Date**  
**Deposit Date**

---

## Territorial Authorities

Auckland Council

---

## Comprised In

CT 721042

---

## Created Parcels

Parcels	Parcel Intent	Area	CT Reference
Lot 47 Deposited Plan 518237	Fee Simple Title	0.0593 Ha	
Lot 48 Deposited Plan 518237	Fee Simple Title	0.0550 Ha	
Lot 53 Deposited Plan 518237	Fee Simple Title	0.0547 Ha	
Lot 54 Deposited Plan 518237	Fee Simple Title	0.0553 Ha	
Lot 55 Deposited Plan 518237	Fee Simple Title	0.0568 Ha	
Lot 56 Deposited Plan 518237	Fee Simple Title	0.0696 Ha	
Lot 57 Deposited Plan 518237	Fee Simple Title	0.0706 Ha	
Lot 1 Deposited Plan 518237	Fee Simple Title	0.2124 Ha	
Lot 2 Deposited Plan 518237	Fee Simple Title	0.2804 Ha	
Lot 915 Deposited Plan 518237	Fee Simple Title	0.0160 Ha	
Lot 914 Deposited Plan 518237	Fee Simple Title	0.0287 Ha	
Lot 46 Deposited Plan 518237	Fee Simple Title	0.0710 Ha	
Area X Deposited Plan 518237	Easement		
Area Y Deposited Plan 518237	Easement		
Area A Deposited Plan 518237	Easement		
Area B Deposited Plan 518237	Easement		
Area C Deposited Plan 518237	Easement		
Area D Deposited Plan 518237	Easement		
Area E Deposited Plan 518237	Easement		
Area F Deposited Plan 518237	Easement		
Area G Deposited Plan 518237	Easement		
Area H Deposited Plan 518237	Easement		
Area I Deposited Plan 518237	Easement		



# Title Plan - LT 518237

---

## Created Parcels

Parcels	Parcel Intent	Area	CT Reference
Area J Deposited Plan 518237	Easement		
Area K Deposited Plan 518237	Easement		
Area L Deposited Plan 518237	Easement		
Area M Deposited Plan 518237	Easement		
Area N Deposited Plan 518237	Easement		
Area O Deposited Plan 518237	Easement		
Area P Deposited Plan 518237	Easement		
Area Q Deposited Plan 518237	Easement		
Area R Deposited Plan 518237	Easement		
Area S Deposited Plan 518237	Easement		
Area T Deposited Plan 518237	Easement		
Area U Deposited Plan 518237	Easement		
Area V Deposited Plan 518237	Easement		
Area W Deposited Plan 518237	Easement		
Area Z Deposited Plan 518237	Easement		
Area AA Deposited Plan 518237	Easement		
Area AB Deposited Plan 518237	Easement		
Area AC Deposited Plan 518237	Easement		
Area AD Deposited Plan 518237	Easement		
Area AE Deposited Plan 518237	Easement		
Area AF Deposited Plan 518237	Easement		
Area AG Deposited Plan 518237	Easement		
Area AH Deposited Plan 518237	Easement		
Area AI Deposited Plan 518237	Easement		
<b>Total Area</b>		<hr/> 1.0298 Ha	

# Schedule / Memorandum

Land Registration District

North Auckland

Survey Number

LT 518237

Territorial Authority (the Council)

Auckland Council

## Schedule of Existing Easements

Last Edited: 21 Dec 2017 14:02:35

<u>Purpose</u>	<u>Shown</u>	<u>Servient Tenement</u>	<u>Creating Document Reference</u>
Right to Maintain Garden	B	Lot 56	EI 10332449.6
	C	Lot 56	EI 10332449.6
	D	Lot 55	EI 10332449.6
	E	Lot 55	EI 10332449.6
	F	Lot 54	EI 10332449.6
	G	Lot 54	EI 10332449.6
	H	Lot 53	EI 10332449.6
	I	Lot 53	EI 10332449.6
	J	Lot 1	EI 10332449.6
	A	Lot 57	EI 10332449.6
	K	Lot 1	EI 10332449.6
	L	Lot 1	EI 10332449.6
	M	Lot 1	EI 10332449.6
	N	Lot 1	EI 10332449.6
	O	Lot 1	EI 10332449.6
	P	Lot 1	EI 10332449.6
	Q	Lot 1	EI 10332449.6
	R	Lot 48	EI 10332449.6
	S	Lot 48	EI 10332449.6
	T	Lot 47	EI 10332449.6
	U	Lot 47	EI 10332449.6
	V	Lot 46	EI 10332449.6
	W	Lot 46	EI 10332449.6
	Z	Lot 46	EI 10332449.6
	X	Lot 2	EI 10225301.11
	Y	Lot 2	EI 10225301.11

### Notes

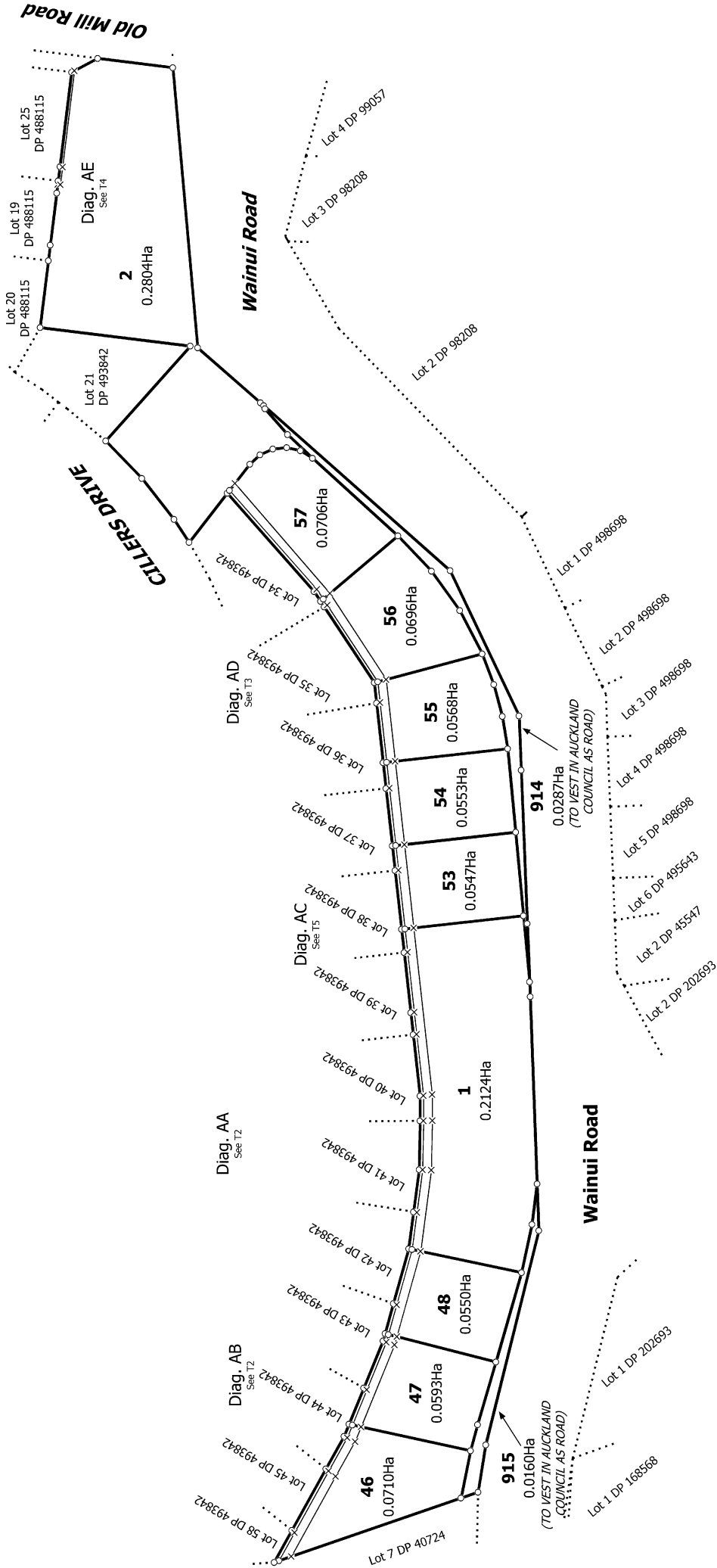
Last Edited: 21 Dec 2017 14:03:19

AREAS SHOWN AS AA - AI HEREON ARE TO BE SUBJECT TO LAND COVENANTS.





Diag. A



T 1/5

Land District: North Auckland

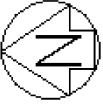
Digitally Generated Plan

Generated on: 21/12/2017 2:36pm Page 4 of 6

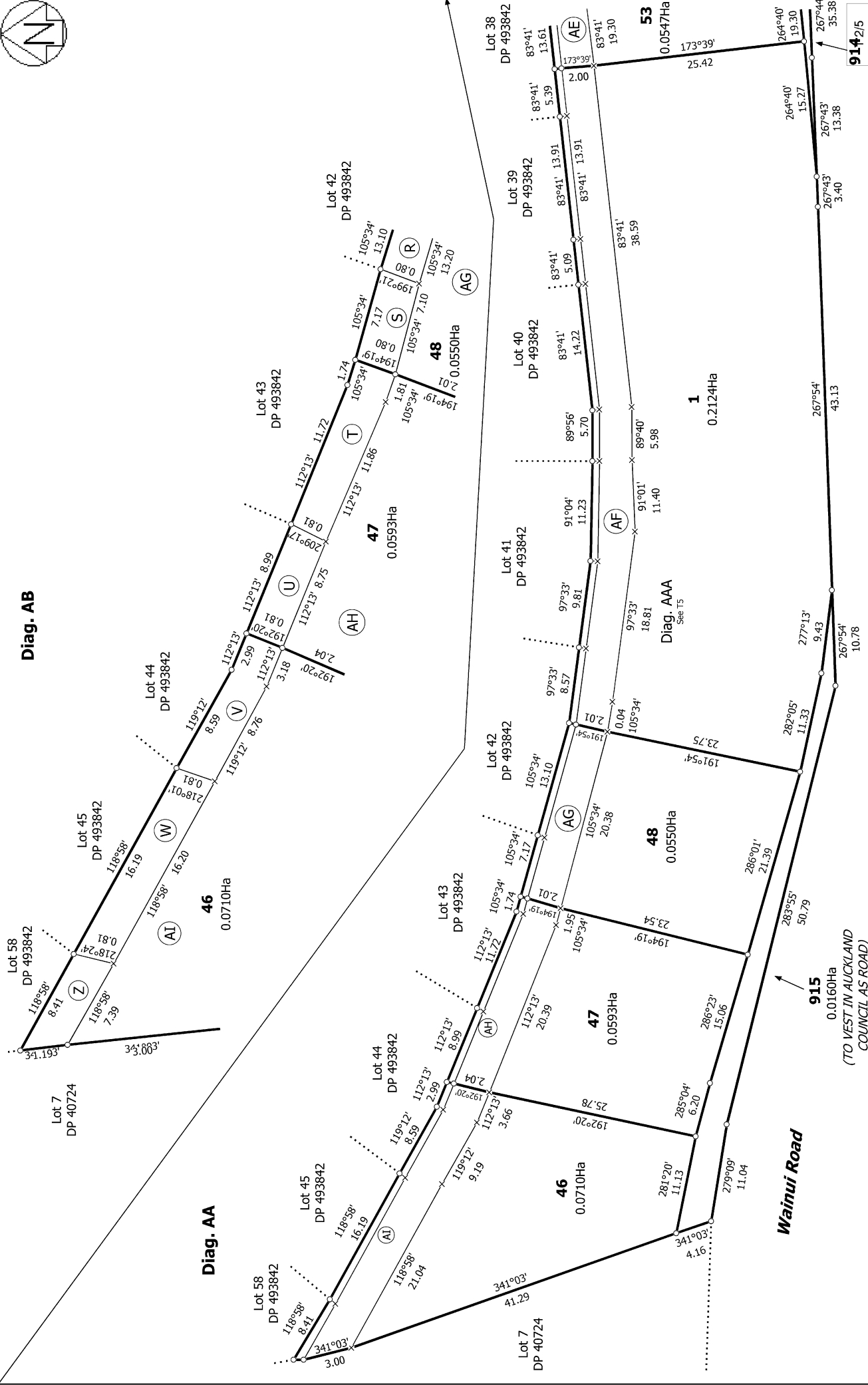
LOTS 1, 2, 46 TO 48, 53 TO 57, 914 AND 915 BEING A SUBDIVISION OF SECTION LOT 1000 DP 493842

Surveyor: Michael Rowan Hallam  
Firm: Wood & Partners Consultants Ltd

Title Plan  
LT 518237  
DRAFT



Diag. AB



Diag. AA

Land District: North Auckland  
 Digitally Generated Plan  
 Generated on: 21/12/2017 2:36pm Page 5 of 8

Surveyor: Michael Rowan Hallam  
 Firm: Wood & Partners Consultants Ltd

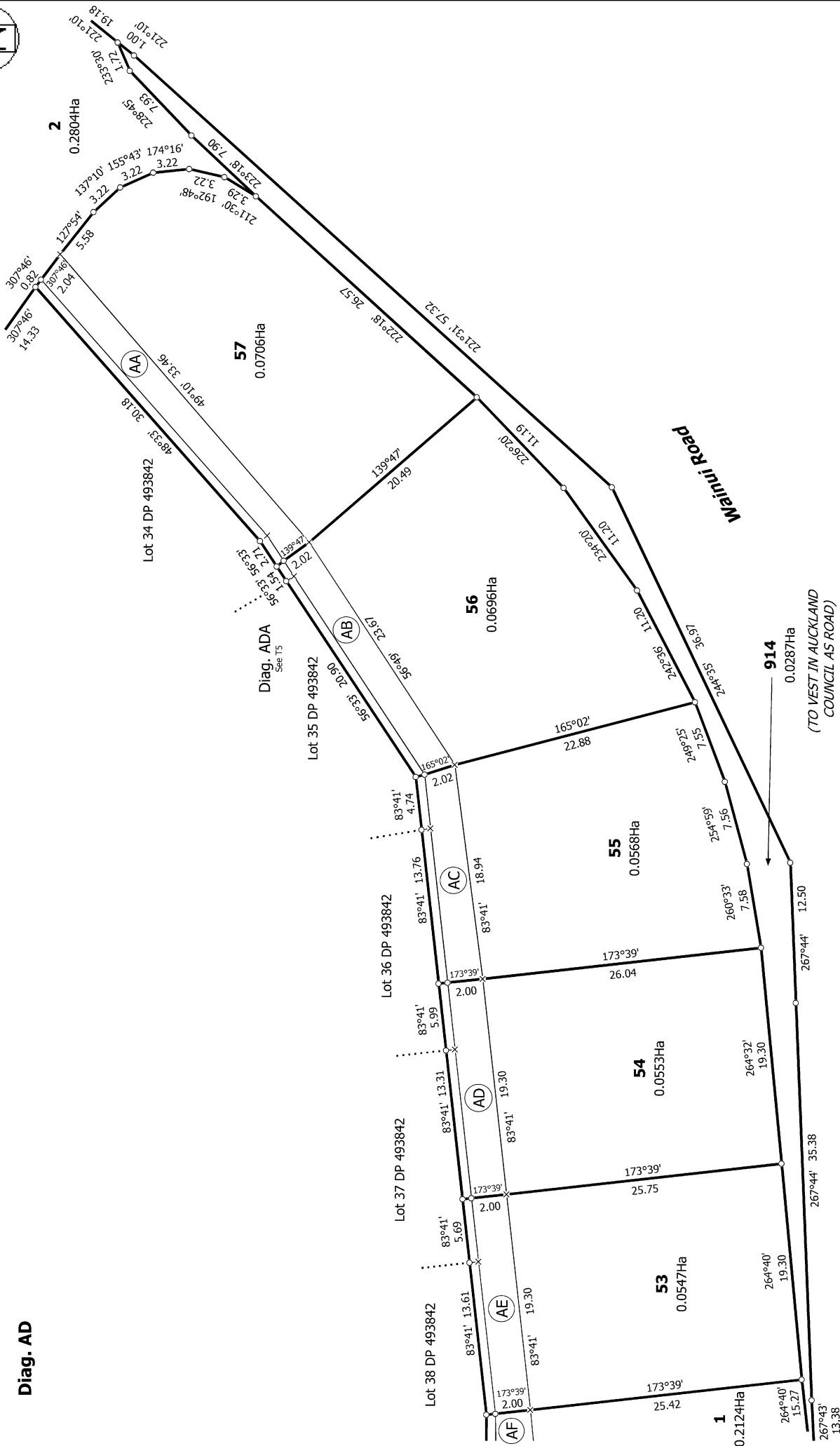
LOTS 1, 2, 46 TO 48, 53 TO 57, 914 AND 915 BEING A SUBDIVISION OF  
 SECTION LOT 1000 DP 493842

Title Plan  
 LT 518237  
 DRAFT

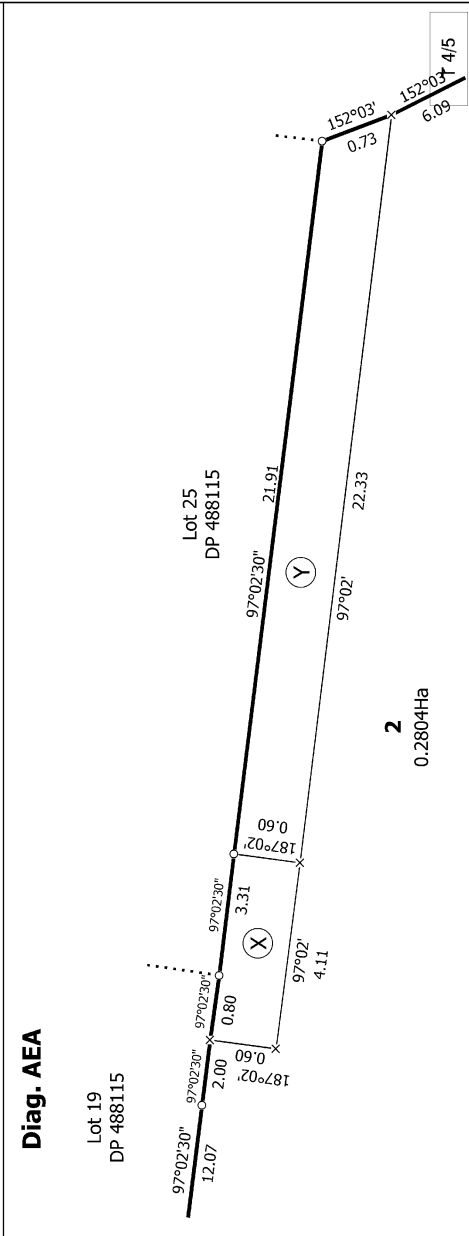
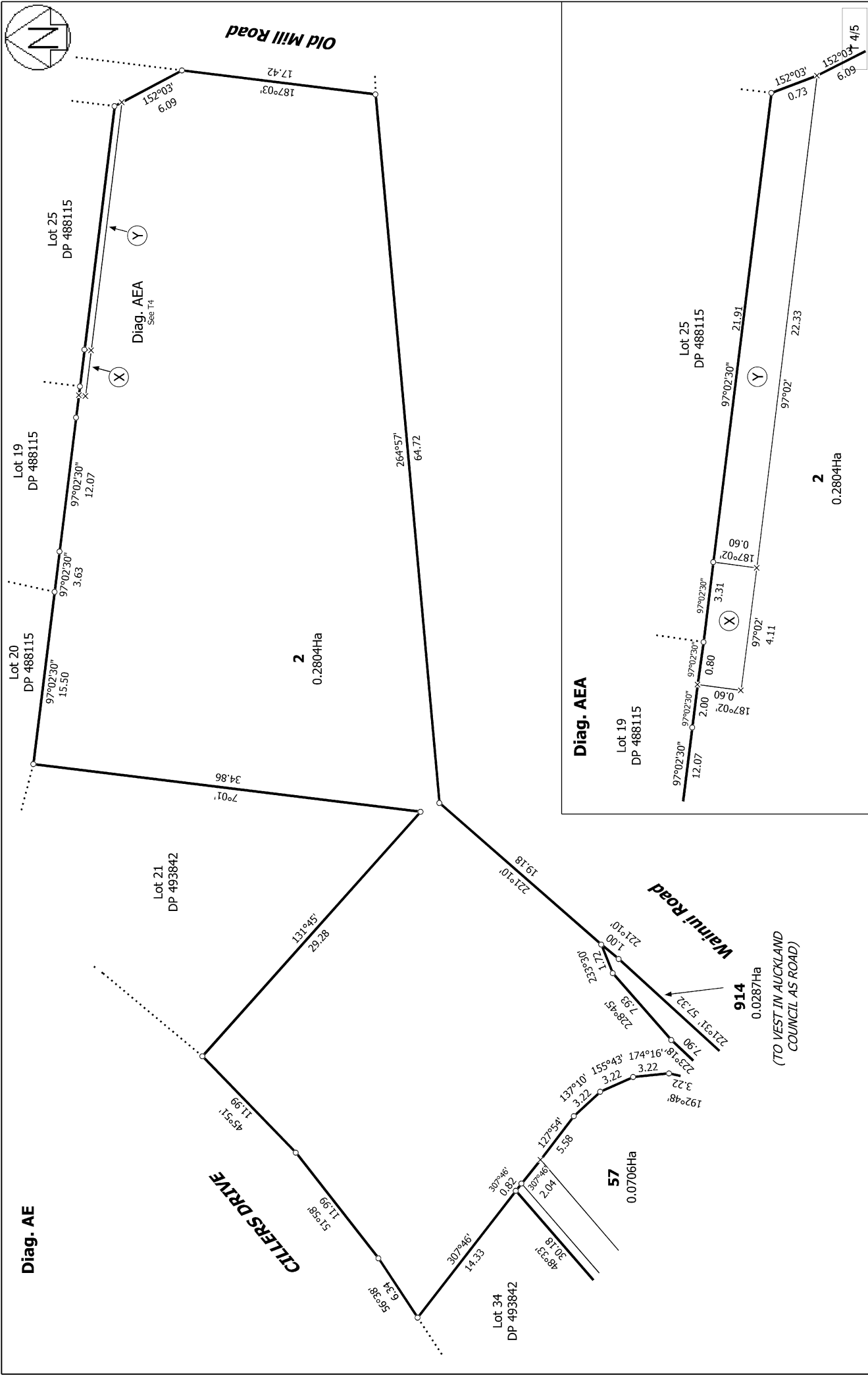
914/2/5



Diag. AD



T 3/5	Title Plan LT 518237 DRAFT	Surveyor: Michael Rowan Hallam Firm: Wood & Partners Consultants Ltd	LOTS 1, 2, 46 TO 48, 53 TO 57, 914 AND 915 BEING A SUBDIVISION OF SECTION LOT 1000 DP 493842
Land District: North Auckland	Digitally Generated Plan	Generated on: 21/12/2017 2:36pm Page 6 of 8	



Land District: North Auckland <b>Digitally Generated Plan</b> <small>Generated on: 21/12/2017 2:36pm Page 7 of 8</small>	<b>LOTS 1, 2, 46 TO 48, 53 TO 57, 914 AND 915 BEING A SUBDIVISION OF SECTION LOT 1000 DP 493842</b>	Surveyor: Michael Rowan Hallam Firm: Wood & Partners Consultants Ltd	<b>Title Plan</b> <b>LT 518237</b> <b>DRAFT</b>
--	---	---	---





# Title Plan - LT 523792

---

**Survey Number** LT 523792  
**Surveyor Reference** P18-105 Wainui Rd (3)  
**Surveyor** Kendall Lisa Reid  
**Survey Firm** Wood & Partners Consultants Ltd  
**Surveyor Declaration**

---

## Survey Details

**Dataset Description** LOTS 197 TO 202, 204 TO 208 AND 49 TO 52 BEING A SUBDIVISION OF LOTS 2 AND 3 DP 518236 AND LOT 1 DP 518237

**Status** Initiated

**Land District** North Auckland      **Survey Class** Class A

**Submitted Date**      **Survey Approval Date**  
**Deposit Date**

---

## Territorial Authorities

Auckland Council

---

## Comprised In

CT 811559  
CT 820473  
CT 820474

---

## Created Parcels

Parcels	Parcel Intent	Area	CT Reference
Lot 197 Deposited Plan 523792	Fee Simple Title	0.0663 Ha	834294
Lot 198 Deposited Plan 523792	Fee Simple Title	0.0655 Ha	834295
Lot 199 Deposited Plan 523792	Fee Simple Title	0.0641 Ha	834296
Lot 200 Deposited Plan 523792	Fee Simple Title	0.0632 Ha	834297
Lot 201 Deposited Plan 523792	Fee Simple Title	0.0664 Ha	834298
Lot 202 Deposited Plan 523792	Fee Simple Title	0.0677 Ha	834299
Lot 204 Deposited Plan 523792	Fee Simple Title	0.0681 Ha	834300
Lot 205 Deposited Plan 523792	Fee Simple Title	0.0655 Ha	834301
Lot 206 Deposited Plan 523792	Fee Simple Title	0.0663 Ha	834302
Lot 207 Deposited Plan 523792	Fee Simple Title	0.0670 Ha	834303
Lot 208 Deposited Plan 523792	Fee Simple Title	0.0677 Ha	834304
Lot 49 Deposited Plan 523792	Fee Simple Title	0.0557 Ha	834305
Lot 50 Deposited Plan 523792	Fee Simple Title	0.0506 Ha	834306
Lot 51 Deposited Plan 523792	Fee Simple Title	0.0520 Ha	834307
Lot 52 Deposited Plan 523792	Fee Simple Title	0.0540 Ha	834308
Area J Deposited Plan 523792	Easement		
Area K Deposited Plan 523792	Easement		
Area L Deposited Plan 523792	Easement		
Area M Deposited Plan 523792	Easement		
Area N Deposited Plan 523792	Easement		
Area O Deposited Plan 523792	Easement		



# Title Plan - LT 523792

---

## Created Parcels

Parcels	Parcel Intent	Area	CT Reference
Area P Deposited Plan 523792	Easement		
Area Q Deposited Plan 523792	Easement		
Area R Deposited Plan 523792	Land Covenant		
Area S Deposited Plan 523792	Land Covenant		
Area T Deposited Plan 523792	Land Covenant		
Area U Deposited Plan 523792	Land Covenant		
Area V Deposited Plan 523792	Land Covenant		
Area A Deposited Plan 523792	Land Covenant		
Area B Deposited Plan 523792	Land Covenant		
Area C Deposited Plan 523792	Land Covenant		
Area D Deposited Plan 523792	Land Covenant		
Area E Deposited Plan 523792	Land Covenant		
Area F Deposited Plan 523792	Land Covenant		
Area AF Deposited Plan 523792	Land Covenant		
Area G Deposited Plan 523792	Land Covenant		
Area H Deposited Plan 523792	Land Covenant		
Area I Deposited Plan 523792	Land Covenant		
<b>Total Area</b>		<hr/> 0.9401 Ha	

# Schedule / Memorandum

Land Registration District

**North Auckland**

Survey Number

**LT 523792**

Territorial Authority (the Council)

**Auckland Council**

## Schedule of Existing Easements

Last Edited: 24 Apr 2018 09:13:19

<u>Purpose</u>	<u>Shown</u>	<u>Servient Tenement</u>	<u>Creating Document Reference</u>
Right to Maintain Garden	J	Lot 52	EI 10332449.6
	K	Lot 52	EI 10332449.6
	L	Lot 51	EI 10332449.6
	M	Lot 51	EI 10332449.6
	N	Lot 50	EI 10332449.6
	O	Lot 50	EI 10332449.6
	P	Lot 49	EI 10332449.6
	Q	Lot 49	EI 10332449.6

## Notes

Last Edited: 24 Apr 2018 09:17:38

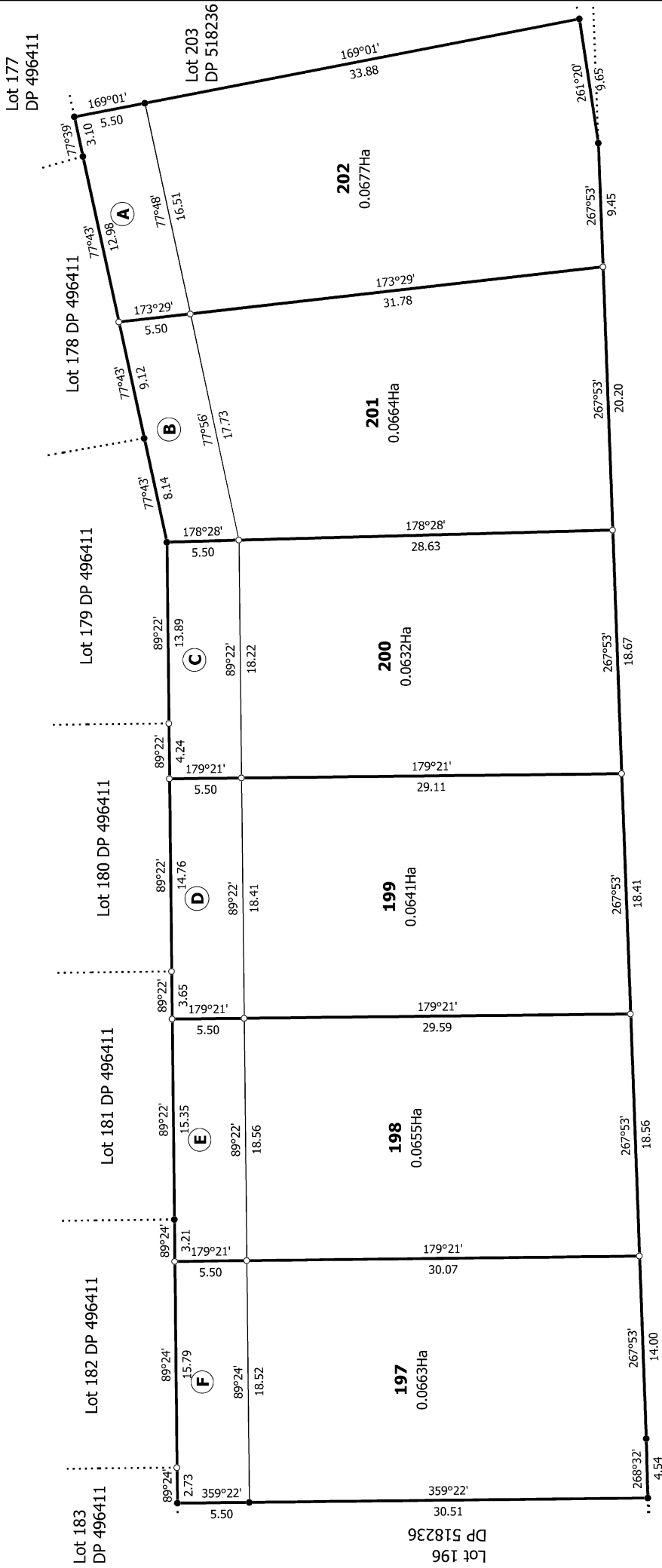
Areas shown as A - I, R - V and AF are to be subject to Land Covenants.

All easements are existing, with areas J - Q previously being areas J - Q DP 518237

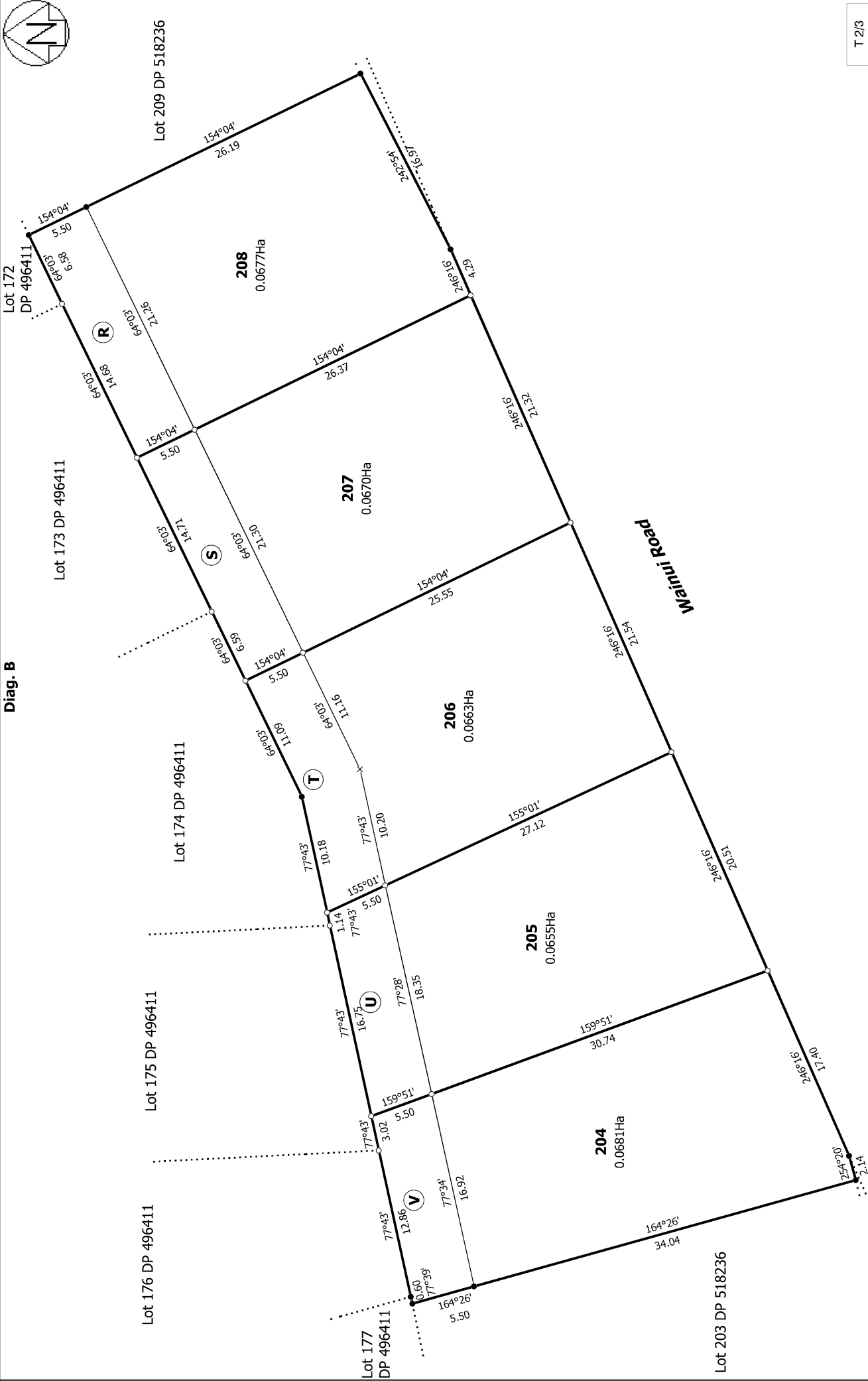
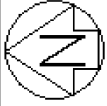




Diag. A



Diag. B



T 2/3

LOTS 197 TO 202, 204 TO 208 AND 49 TO 52 BEING A SUBDIVISION OF  
 LOTS 2 AND 3 DP 518236 AND LOT 1 DP 518237

Surveyor: Kendall Lisa Reid  
 Firm: Wood & Partners Consultants Ltd

Title Plan  
 LT 523792  
 DRAFT

